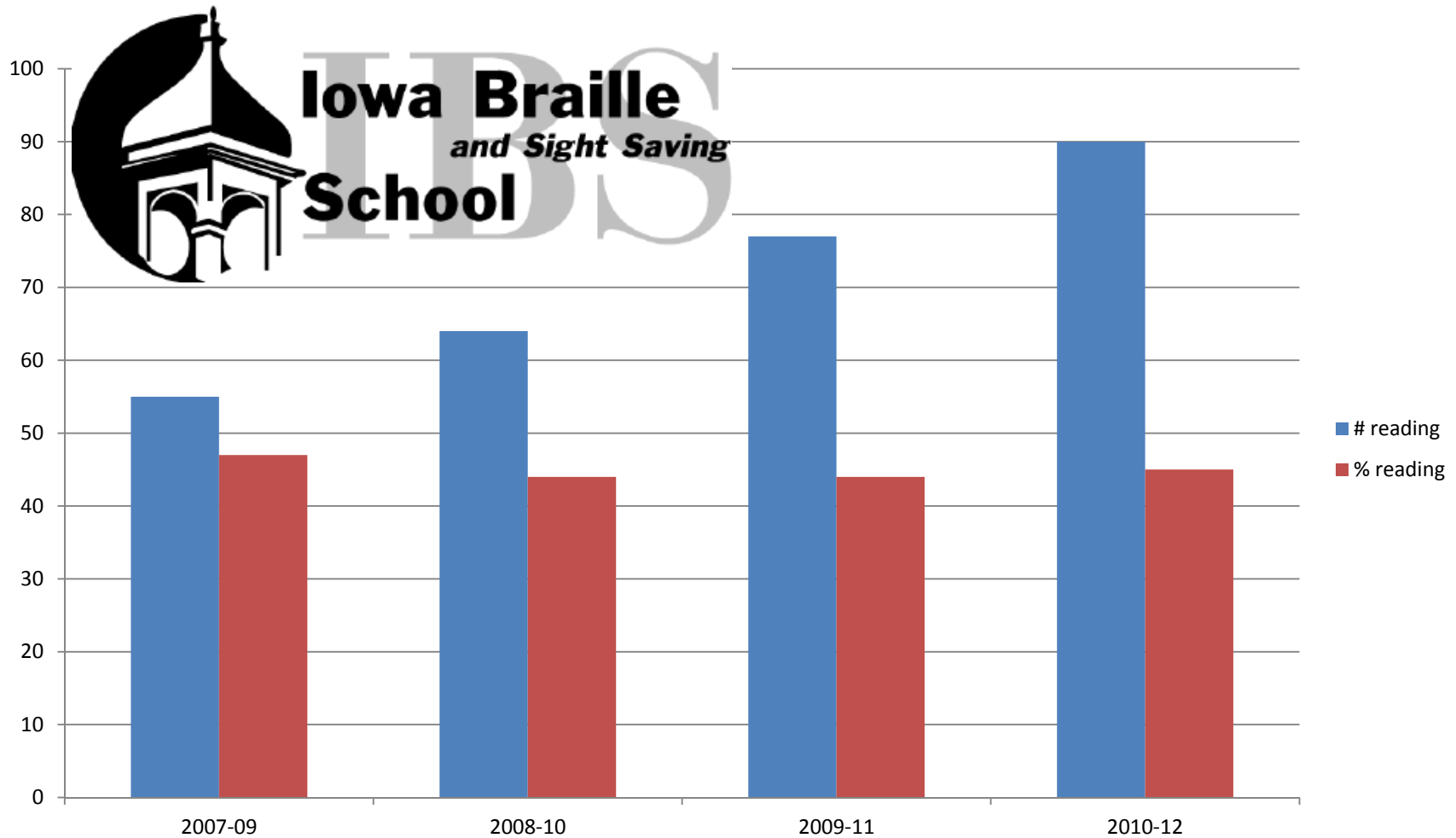


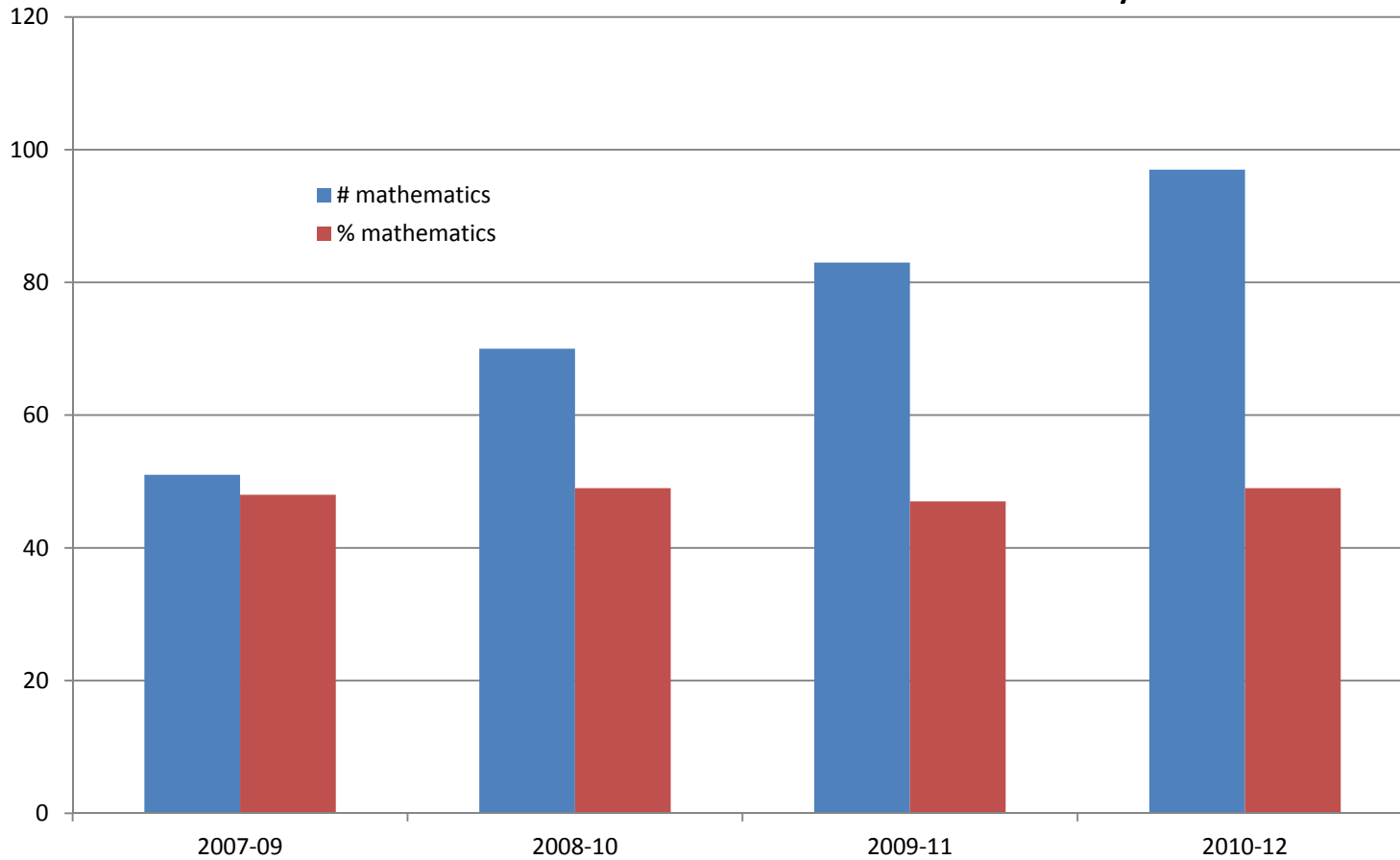
# Iowa's Special Schools Strategic Plan Progress Report 2013



**Target.** Increase by 15% the number of students served by the Statewide System for Vision Services (in conjunction with other partners) who meet or exceed state academic standards in **reading** by 2016.



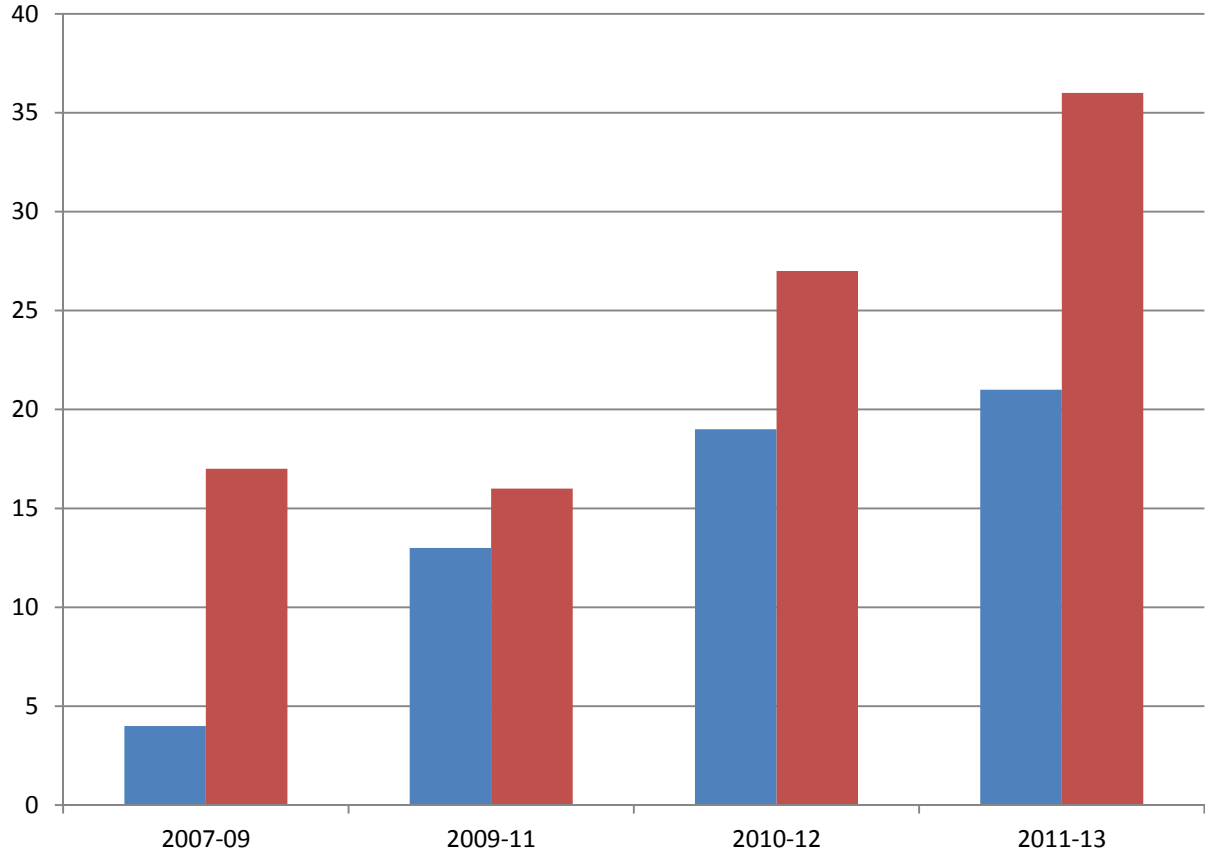
**Target.** Increase by 15% the number of students served by the Statewide System for Vision Services (in conjunction with other partners) who meet or exceed state academic standards in **mathematics** by 2016.



**Target.** The Iowa School for the Deaf shall increase by 15% the number of students who meet or exceed state academic standards in **reading** by 2016.



**Target.** The Iowa School for the Deaf shall increase by 15% the number of students who meet or exceed state academic standards in **mathematics** by 2016.

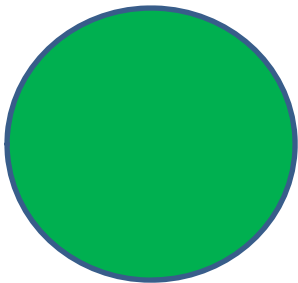


■ # mathematics  
■ % mathematics

**Target.** The Iowa School for the Deaf shall increase reading achievement by at least 50% annually for **identified struggling readers**. The target will be measured using the national standard score average **yearly growth plus a half year gain** in order to close the reading gap.

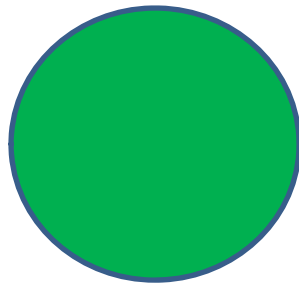
---

- Using a three year average the percent meeting the criteria has increased by 9% from 36% in 2009-11 to 45% in 2011-13.
- Sixteen students met the criteria of 1 and 1/2 years growth representing 48% of the 33 struggling readers.



**Braille.** All students using Braille for reading and or writing will increase their Braille literacy skills. Students will increase their Braille literacy skills by an average of 75 percent by 2016.

- Baseline data was gathered in May 2011 and annual progress data gathered May 2012 and 2013.
- 76% percent of the students made at least 15 percent increase in skills from their baseline scores representing a 4% increase from 2012.



# Iowa's Special Schools Strategic Plan Progress Report 2013 Thank You

